

# Sampson County



Prepared by:

Sampson County Health Department  
&  
Sampson County Partners for Healthy Carolinians

# Community Health Assessment

## Sampson County

DECEMBER 2007

Wanda Robinson  
Health Director  
Sampson County Health Department

Consuela Combs  
Health Educator  
Sampson County Health Department

Priscilla Bell  
Chair  
Sampson County Partners for Healthy Carolinians

## Acknowledgments

Sampson County Partners for Healthy Carolinians would like to thank all the individuals who assisted with the compiling of data for this year's Community Health Assessment.

### Community Health Assessment Community Members

Access Care

Clinton City Schools

Coharie Tribal Center

Department of Aging

Department of Social Services

Goshen Medical Clinic

Liberty Home Care

NC Commission of Indian Affairs

NC Cooperative Extension

Sampson Community College

Sampson County Health Department

Sampson County Department of Aging

Sampson Regional Medical Center

Sampson County Parks and Recreation Department

Sampson County Public Libraries

Sampson County Partnership for Children

Sampson County Schools

Tri-County Community Health Center

U-Care

**TABLE OF CONTENTS**

- **Introduction** 1
- **Demographic Profile of Sampson County** 2
  - Table 1: Population Distribution by Race 3
  - Table 2: Population Distribution by Age 3
  - Table 3: Population Distribution by Municipality 4
- **Socio-Economic Profile of Sampson County** 5
  - Table 4: Industry Wages 6
  - Table 5: Employment and Income Data 6
  - Table 6: Household Median Income 7
  - Table 7: Agricultural Data 8
- **Educational Profile of Sampson County** 9
  - Table 8: Clinton City Schools Population 10
  - Table 9: Clinton City Schools Racial Demographics 10
  - Table 10: Sampson County Schools Population 11
  - Table 11: Sampson County Schools Racial Demographics 11
- **Public Safety Profile of Sampson County** 13
  - Table 12: Sampson County Crime Rate 14
- **Sampson County Community Services and Organizations** 16
- **Sampson County Health and Human Services** 18
  - Table 13: Medicaid Eligible, 2006 20
  - Table 14: Uninsured Population, 2003 20
- **Infant Mortality and Maternal Health Profile of Sampson County** 21
  - Table 15: Percentage of Women Receiving Prenatal Care 22
  - Table 16: Pregnant Women Receiving 1<sup>st</sup> Trimester Prenatal Care, 2001-2005 22
  - Table 17: Pregnant Women Who Smoked During Pregnancy 22
  - Table 18: Percentage of Women Receiving WIC During Pregnancy 23

Table 19:	Low-birth Weight Numbers and Percent, 2001-2005	23
Table 20:	Infant Death Rates per 1000, 2001-2005	24
Table 21:	Fetal Death Rates per 1000, 2001-2005	24
Table 22:	Total Birth for 2006	24
<b>•</b>	<b>Child and Adolescent Health Profile of Sampson County</b>	<b>25</b>
Table 23:	2004 Race and Diversity among Children	26
Table 24:	2006 Infant and Child Death	26
Table 25:	2006 Pregnancy Rates, Ages 15-19	27
Table 26:	2006 Pregnancy Rates, Ages 15-17	27
<b>•</b>	<b>Mortality and Other Health Indicators</b>	<b>28</b>
Table 27:	Race Specific and Age Adjusted Death Rate, 2001-2005	29
Table 28:	Age Adjusted Heart Disease Rates	30
Table 29:	Projected Cancer New Cases and Death, 2007	30
Table 30:	Cancer Mortality Rates, 2001-2005	31
Table 31:	Prevalence of Children Ages 2-20 At-Risk for Overweight and Obesity	32
Table 32:	Residents in Sampson County with Diabetes Condition	32
Table 33:	Diabetes Mortality Statistics Summary, 2005	32
<b>•</b>	<b>Communicable and Sexual Transmitted Diseases</b>	<b>34</b>
Table 34:	Communicable Disease Cases, 2006	35
Table 35:	Sexually Transmitted Diseases Rates, 2001-2005	35
Table 36:	HIV Mortality Summary, 2005	35
Table 37:	AIDS Cases and Report per 100,000, 2001-2005	35
Table 38:	Gonorrhea/Chlamydia Cases and Rates per 100,000, 2001-2005	36
<b>•</b>	<b>Summary of Sampson County Community Health Assessment</b>	<b>37</b>
<b>•</b>	<b>Action Plans</b>	<b>42</b>
<b>•</b>	<b>Appendices</b>	<b>44</b>
<b>•</b>	<b>Appendix A: Community Assessment Process</b>	<b>45</b>
<b>•</b>	<b>Appendix B: Focus Groups</b>	<b>47</b>
<b>•</b>	<b>Appendix C: Survey Tools</b>	<b>52</b>

- **Appendix D: Survey Tool Results** 64
- **Appendix E: Sampson Regional Medical Center Survey Tool** 76
- **Appendix F: Sampson Regional Medical Center Survey Tool Results** 78
- **Appendix G: Providers Survey Tool** 81
- **Appendix H: Provider Survey Tool Results** 84
- **References** 89

### **Introduction**

Every four years, counties perform a Community Health Assessment (CHA) to identify the concerns and needs of the citizens. The definition of Community Assessment is: a means of examining aggregate health and social information and statistics to determine the needs of the community. The CHA is the foundation for improving and promoting the health of the community. The role of the assessment is to identify factors that affect the health of a population and determine the availability of resources within the community to adequately address these issues. It is also a tool used to gather information for other health professions and others to meet the needs of Sampson County residents. This includes the collection and interpretation of data, evaluation of health resources, identification of health problems, and development of strategies to address these problems.



**Demographic Profile  
for  
Sampson County**

## Population

Sampson County is the second largest county in North Carolina with eight incorporated towns which include Roseboro, Autryville, Salemburg, Turkey, Garland, Harrells, Newton Grove and the largest, Clinton. It is a community of hard working, caring individuals with strong roots and values. This hard work has made Sampson County a national leader in pork, poultry and agricultural production. Sampson County is currently number two in the state in both hog and turkey production. In addition, Sampson County ranks within the top 20 in the state for the production of cattle, beef cows, broilers and chickens.

### Demographic Profile for Sampson County

Since 2000, a very high number of people migrated to Sampson from outside the country. The immigration into Sampson totals 1.1 percent of all immigration into North Carolina. This level of international migration can be considered very high when compared to international migration per 2006 population. Sampson County populations has increased from 60,319 in 2000 to over 63,500 in 2006.

This growth represents an increase of 4.5 percent. Sampson ranks 38 of 100 counties when analyzing total population change in North Carolina and the county ranks 694 of 3,141 counties by growth in county population in the United States. The area can be described as having a very high level of diversity, with 43.8 percent of the population being minorities. This is greater than the state of North Carolina percent of 29.6 for minorities. Since 2000, Sampson has increased the percent of minority makeup by 43.6 percent.

**Table 1 Population Distribution by Race**

	White	Black	Hispanic	Native American	Asian
Sampson	59.8	29.9	15.1	1.8	.3
North Carolina	72.1	21.6	4.7	1.2	1.4

Source: [www.demog.state.nc.us](http://www.demog.state.nc.us)

**Table 2 Population Distribution by Age**

	Median Age	Under 18	18-24	25-44	45-64	Over 65
Sampson	35	25.4	9.4	29.7	22.3	12.8
North Carolina	35.3	24.4	10.0	31.1	22.5	12.0

Source: [www.demog.state.nc.us](http://www.demog.state.nc.us)

**Table 3 Population Distribution by Municipality**

	April 2000	July 2006	Growth Amount	Growth Percent
Sampson	60,160	64,057	3,897	6.48
Autryville	196	203	7	3.57
Clinton	8,600	8,804	204	2.37
Faison(Part)	0	0	0	<b>n/a</b>
Falcon(Part)	0	0	0	<b>n/a</b>
Garland	808	798	-10	-1.24
Harrells(Part)	182	189	7	3.85
Newton Grove	606	627	21	3.47
Roseboro	1,267	1,393	126	9.94
Salemburg	469	477	8	1.71
Turkey	262	268	6	2.29

Source: [www.demog.state.nc.us](http://www.demog.state.nc.us)

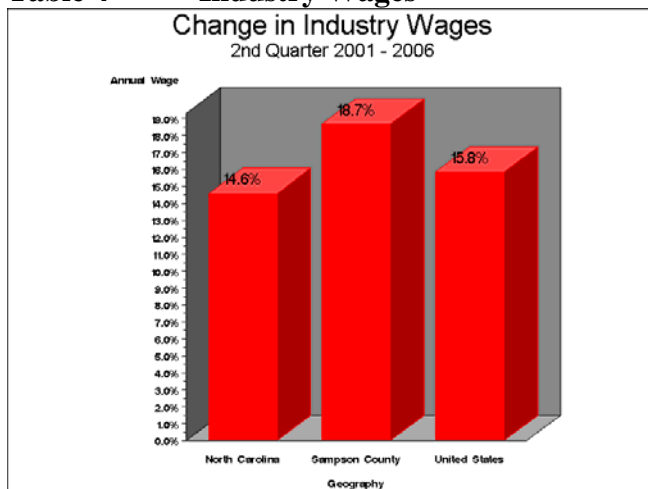


## Socioeconomic Profile of Sampson County

### EMPLOYMENT

From the second quarter of 2001 to the second quarter of 2006, industry wages have increased in Sampson County by a total of 18.7%. This is greater than the growth in industry wages for North Carolina and greater than the growth in average wages for the US.

**Table 4**      **Industry Wages**  
 Change in Industry Wages  
 2nd Quarter 2001 - 2006



Source: [www.demog.state.nc.us](http://www.demog.state.nc.us)

**Top 5 Industries**

1. Limited-service eating places (148 new jobs)
2. Electronic markets and agents and brokers (139 new jobs)
3. Building material and supplies dealers (125 new jobs)
4. Child day care services (103 new jobs)
5. Machinery and supply merchant wholesalers (57 new jobs)

Top-paying jobs in Sampson County can be found are in computer systems design and related services (\$51,643), offices of dentists (\$48,844), offices of physicians (\$44,400) and management of companies and enterprises (\$40,661).

**Table 5 Employment and Income Data**

Labor Force 2006	31,450
Employed 2006	30,003
Unemployed 2006	1,447
Unemployment Rate 2006 (%)	4.6
Per Capita Income 2005	\$24,836

Source: [UNC Sheps Center for Health Services Research](#)

**Income and Poverty in Sampson County**

Sampson County is reported to have a medium-low household income of \$37,198. The income level is 23.2 percent lower than the median income in State of **North Carolina** of \$45,845 and the median is 32.1 percent lower than the median household income in the United States of \$49,133.

**Table 6 Household Median Income**

	Median Income	Families	Male	Female
Sampson	\$31,793	\$38,072	\$26,806	\$20,657
North Carolina	\$39,184	\$46,335	\$32,132	\$24,978

Source: [www.census.gov](http://www.census.gov)

The following household income (in 2005 dollars) information for Sampson County has been reported by the Decennial Census 2000:

- White households reported median household income of \$43,322, which was 16.5 percent greater than the median in 2000.
- Native American/Native Alaskan households in Sampson County had a median household income level of \$32,249, which was 13.3 percent less than the median income levels in this area.

- Latino households in Sampson County had a median household income of \$31,684, which is 14.8 percent less than the reported median household income for all households in the area.
- Black/African-American households reported a median household income that was 31 percent less than the overall median reported in 2000, with a reported median of \$25,676.
- Asian households reported a median household income of \$25,229. This median income level is 32.2 percent less than the reported median household income for all households in the area.

**Agriculture**

Agriculture and agribusiness account for nearly 20 percent of North Carolina's jobs and income, but the industry faces changing technology, world markets, consumer demands and environmental regulations. Traditionally, Sampson County has been perceived as a predominantly agricultural region. Over the years, agriculture and its related industries have grown into an \$843 million dollar business ranking Sampson County as number one in the state. Sampson County is number two in state for livestock, dairy, and poultry production. Sampson County also rank number one in the nation in for sweet potatoes and number two in hay, tobacco, hogs and pigs (2,025,000), and turkey raised (over 9 million). As of the most recent Agricultural Census, in 2002, North Carolina ranks as the second-largest hog farming state in the country, after Iowa.

**Table 7 Agricultural Data**

Number of Farms	1,178
Total Land in Farms, Acres	298,483
Average Farm Size, Acres	253
Average Value of Farm & Building	\$784,955
Average Market Value of Machinery & Equipment	\$102,554
Average Total Farm Production Expense	\$468,225
Total Cash Receipts	\$843,070,000

Source: <http://www.ncagr.com/stats/2007AgStat/RutherfordSampson.pdf>



# Education Profile Of Sampson County

## EDUCATION

Education is an important contributor to the health of county residents. Success in school has long-term effects on life. Individuals who do not succeed in school are more likely to dropout, which is associated with becoming employed later than usual, with poverty and with poor health. Children who are experiencing health issues are more likely to be distracted during school and miss more school days. Schools also are one of the primary locations where health information is shared with youth.

Sampson County has two school district; Clinton City and Sampson County schools. Clinton City has 5 schools in the district and Sampson County has 16 schools in its districts. The teacher-student ratio is the same for both district: 15:1, which is also the NC ratio.

### Clinton City Schools

**Table 8 Clinton City Schools Population**

Total Schools:	5
Total Students:	3,100
Classroom Teachers (FTE):	210.0
Student/Teacher Ratio:	14.8
Summer Migrant Students:	N/A
ELL (formerly LEP) Students:	137
Students with IEPs:	299

Source: [http://nces.ed.gov/ccd/districtsearch/district\\_detail.asp?Search=1&State=37&County=Sampson&ID2=3700930](http://nces.ed.gov/ccd/districtsearch/district_detail.asp?Search=1&State=37&County=Sampson&ID2=3700930)

**Table 9 Clinton City Schools Racial Demographics**



	Clinton City	North Carolina
Black, not Hispanic	47%	32%
White, not Hispanic	36%	57%
Hispanic	13%	8%
American Indian/Alaskan Native	4%	1%
Asian/Pacific Islander	<1%	2%

Source: NCES, 2005-2006

**Sampson County Schools**

**Table 10 Sampson County Schools Population**

Total Schools	16
Total Students:	8,262
Classroom Teachers (FTE):	569.0
Student/Teacher Ratio:	14.5
Summer Migrant Students:	107
ELL (formerly LEP) Students:	1,008
Students with IEPs:	997

Source: [http://nces.ed.gov/ipeds/data/districtsearch/district\\_detail.asp?Search=1&State=37&County=Sampson&ID2=3700930](http://nces.ed.gov/ipeds/data/districtsearch/district_detail.asp?Search=1&State=37&County=Sampson&ID2=3700930)

**Table 11 Sampson County Schools Racial Demographics**



Ethnicity	Sampson	North Carolina
White, not Hispanic	48%	57%
Black, not Hispanic	30%	32%
Hispanic	21%	8%
American Indian/Alaskan Native	1%	1%
Asian/Pacific Islander	<1%	2%

Source: NCES, 2005-2006

## **Sampson Community College**

Sampson County is the home to Sampson Community College, which is located on Highway 24 West in Clinton. The College provides a range of services to support both curriculum and continuing education students in their program of study. Many of these services are available without charge and provide support for students seeking to enrich or strengthen their academic abilities as well as opportunities for personal and career growth beyond those available in the classroom. According the 2000 Decennial Census, 13.4 percent of the White, 7 percent of Black or African American, 12.8 percent of the Asian and 6.6 percent of the Hispanic or Latino population, over the age 25, has achieved at least a Bachelors Degree.

### **Early College**

Sampson Early College High School (SECHS) is a school of choice for high school, serving Sampson County School and Clinton City School students. SECHS graduates will earn their high school diploma and an associate degree or 2 years of college credit in a rigorous college environment while attending high school.

- The SECHS is located on Sampson Community College Campus.
- The early college program receives funding through Learn & Earn and is supported by the New Schools Project, the Department of Public Instruction, the NC General Assembly, and the State Board of Education.
- The SECHS provides a personalized learning environment bridging the gap between high school and college, emphasizing adult-student relationships through rigorous and relevant instruction.

## **Tar Heel Challenge Academy**

The North Carolina Tarheel Challenge Academy is a 17 and a half month military oriented resident program that involves 22 weeks in residence at the Salemburg campus and a 12 month Post-Residential Phase. Funding is by the federal, state, and local government at no charge to the individual. Some of the activities are:

- High School Equivalency Academics
- Career Planning and Exploration with Local Employers
- Community Service Projects
- Military Skills, Drill & Ceremonies
- Group Discussions and Counseling
- Computer Skills Projects

### **Eligible applicants must be:**

- High school drop-outs
- Between the ages of 16-18 years old
- Free of illegal drugs
- North Carolina residents

- Not under indictment or convicted of a felony offense

### **North Carolina Justice Academy**

The Justice Academy is located in Salemburg on a 100 acres campus and has fifteen permanent structures which include three dormitories, a cafeteria, and a learning resource center, and eleven classrooms. There are also three firing ranges, a driving track, a gymnasium, video production studio, and a print shop on this campus. Growth at the Justice Academy has been phenomenal. During that first year, just over 4,000 students were trained in 90 courses. Last year, over 13,000 students were trained in 682 courses. The Education and Training division of the Academy is divided into four training centers: Management & Supervision, Investigations/Traffic, Legal, and Specialized Commission/Tactical.



## Public Safety Profile for Sampson County

### PUBLIC SAFETY

- Sampson County is served by numerous public safety agencies that include law enforcement, fire, emergency services, and animal control.
- Law Enforcement..... (A )Sampson County Sheriff Department has 127 full-time employees and 6 part-time. (B) City of Clinton Police Department is currently composed of 33 full-time sworn police officers, two civilian support staff members, one parking enforcement (non-sworn), one animal control (non-sworn), and 10 reserve officers. (C) Roseboro has 10 full time employees.
- Fire.....City of Clinton Fire Department has a full-time Chief, full-time Deputy Chief, along with two full-time Lieutenants and five full-time firefighters. There is also a full-time administrative assistant. There are 30 part-timers throughout Sampson County.
- Emergency Services.....Services provided by the Sampson County Emergency Management and include paramedic level services with staff located in strategic areas throughout the county. Emergency Management Service has nineteen 911 Communicators
- Animal Control.....Four Animal Control staff members

**Crime Rate**

**Table 12 Sampson County Crime Rates**

Year	Index Rate	Violent Rate	Property Rate	Murder Rate	Rape Rate	Robbery Rate	Assault Rate	Burglary Rate	Larceny Rate	Arson Rate
2000	3,898.4	259.2	3,639.1	6.6	23.3	69.8	159.5	1,397.5	1,974.1	24.9
2001	4,051.3	309.7	3,741.6	6.8	20.4	110.6	171.9	1,604.5	1,914.2	28.9
2002	3,494.5	285.4	3,209.1	5.1	44.4	85.4	150.4	1,454.2	1,549.9	27.3
2003	2,225.3	259.4	1,966.0	9.9	13.2	92.5	143.7	731.9	1,097.0	11.6
2004	3,745.0	328.7	3,416.3	11.9	45.8	76.3	194.9	1,591.2	1,591.2	35.6
2005	3,823.3	297.3	3,526.0	6.6	26.6	68.1	196.0	1,581.1	1,700.7	24.9
2006	3,481.7	363.4	3,118.3	8.2	39.3	90.0	225.9	1,353.7	1,483.0	29.5

Source: [www.demog.state.nc.us](http://www.demog.state.nc.us) Crime Rate Per 100,000

**Domestic Violence**

Domestic Violence or Spouse Abuse refers to physically or emotionally harmful acts between husbands and wives or between other individuals in intimate relationships. Domestic violence is sometimes referred to as intimate violence. It includes violence that occurs in dating and courtship relationships, between former spouses, and between gay and lesbian partners.

**UCARE**

U Care is a private nonprofit organization which advocates exclusively on behalf of victims of domestic violence and sexual abuse for Sampson County victims and families. A variety of programs and services, both for victims and offenders, exist to treat and prevent domestic violence. Direct services, 24-hour crisis intervention, shelter, counseling, community education, workshops and training. Treatment programs offered are:

- Crisis Intervention
- Support Groups
- Rape Crisis/Sexual Assault
- Rape Prevention
- Abuser Treatment
- Court-Mandated Batterer’s Program\*
- Displaced Homemaker Program
- Life Skills Training

\*only program that requires a small fee



## **Sampson County Community Services and Organizations**

### **COMMUNITY SERVICES**

Sampson County has a variety of community organizations and groups that offer services geared toward the development of social networks. These services are provided to engage and inform the community of events surrounding the residents.

- Churches.....Sampson County is home to over 200 places of worship.
- Library.....The main branch of the Sampson County Library System is located in Clinton, the J.C. Holliday Library with a branch located in Garland, Roseboro and Newton Grove and a bookmobile that travel throughout Sampson County.
- Civic Organizations.....Sampson County has numerous community and civic organizations, including Jaycees, Kiwanis, Lions, Rotary, and other clubs.
- Business Organizations.....Sampson County has 2 very active business organizations, the Clinton Sampson Chamber of Commerce and the Clinton Committee of 100.

## Community Health Assessment

- Recreation / Resources.....The City of Clinton Recreation Department and Sampson County Parks and Recreation offer various team and individual year-long recreation opportunities in various locations throughout the county.
- The Sampson Community Theatre and the Sampson Arts Council offer a wide array of cultural activities and resources including plays, and other theatrical performance.
- The Sampson County Agri-Exposition Center provides an excellent facility for a wide range of business, entertainment, civic and family events. Additionally, the Expo Center is home to the Sampson Center Stage Performing Arts Series.



## Sampson County Health and Human Services

### HEALTH and HUMAN SERVICES

Sampson County Health and Human Services agencies provide services to ensure the health, safety and well being of all Sampson County residents by providing human service needs for various populations such as the indigent, mentally ill, deaf, blind and developmentally disabled.

- Sampson County Health Department
  - Health Promotion
  - Child Health
  - Child Services
  - Dental Health
  - Environmental Health
  - TB Services
  - Women, Infant, Children (WIC)
  - Health Check/Health Choice
  - Health Education
  - Immunization
  - STD Clinic
  - Family Planning
- Department of Social Services
  - Income Maintenance Services
  - Work First Family Assistance
  - Adult and Family Employment Services
  - Child Support Enforcement Program
  - Work First Employment Services
- Sampson Regional Medical Center is located in Clinton as well as the Center for Health & Wellness.
  - Diagnostic & Outpatient Services
  - Emergency Services
  - Primary Care Services
  - Surgical Services
  - Educational Services
  - Home Health Services
  - Special Care Services
  - Cancer Center
- Federal Rural health clinics... Goshen Clinics (3)
- Community Health Centers.....Tri-County Community Health Center, Carolina Pines, and Four County
- Clinton is served by the Urgent Care Center as well as 33 active and 12 affiliate physicians and 11 dentists.
- Department of Aging and In-home Services
  - Older Adult Care Centers
  - Home Improvement Programs
  - Transportation Services
  - Miscellaneous Services
  - Nutrition Sites
  - In-Home Aide Services
  - Information and Case Assistance

- Office of Employment Training
- Mental Health.....Eastpointe serving Sampson, Duplin, Wayne and Lenoir
- Home Health Care
  - Liberty Home Care
  - 3HC (Home Health and Hospice Care, Inc.)
  - Community Home Care & Hospice
  - Sampson Home Health
  - Interim Health Care
- Veterans Office
  - Disabilities Compensation (Service Connected)
  - Disabilities Pension (Non-Service Connected)
  - Insurance (Life)
  - Health Care (Hospital, Clinic, Nursing Home)
  - Education Benefits
  - State Veterans Benefits
  - Death and Burial Benefits

**Health Statistics**

**Table 13 Medicaid Eligible, 2006**

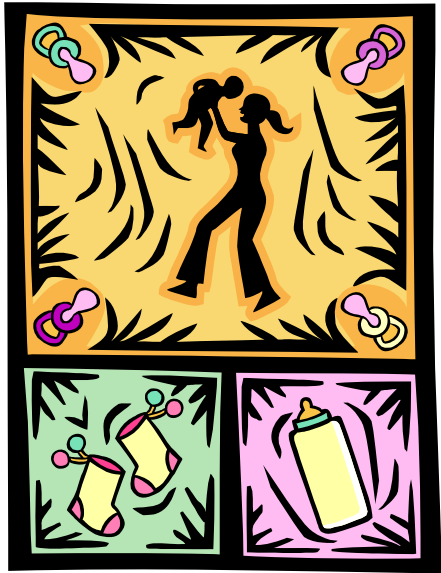
	Medicaid Eligible < age 21	Medicaid Eligible age 21+	Family Planning Eligible	Total Medicaid Eligible	Medicaid Eligible as % of population
Sampson	10,150	7,798	538	18,486	30.73%
North Carolina	977,036	729,393	24,510	1,730,939	21.50%

Source: US Census Data

**Table 14 Uninsured Population, 2003**

	Uninsured Age 0-17		Uninsured Age 18-64		Uninsured Ages 0-64	
	#	%	#	%	#	%
Sampson (Rank 99 of 100 counties)	2,260	14.1%	11,213	29.8%	13,473	25.1%
North Carolina	249,007	12.0%	1,165,061	22.3%	1,414,159	17.5%

Source: State Center for Health Statistics



**Maternal Health and Infant Mortality**

**Maternal Health**

Maternal health refers to the health of women during pregnancy, childbirth and the postpartum period. Maternal health care is a concept that encompasses preconception, prenatal, and postnatal care and can include providing health promotion, screening and interventions for women of reproductive age to reduce risk factors that might affect future pregnancies.

**Prenatal Care**

Prenatal care includes 4 major components: risk assessment, treatment for medical conditions, risk reduction, and education. Each component can contribute to reductions in perinatal illness, disability, and death by identifying and mitigating potential risks and helping women address behavioral factors, such as smoking, alcohol use, and poor nutrition that contribute to poor outcomes. Therefore, prenatal care is more likely to be effective if women begin receiving care early in pregnancy.

**Table 15 Percentage of pregnant women receiving prenatal care**

	1997-1999	2000-2002	2003-2005
Sampson	67.8	70.8	70.3
North Carolina	79.4	79.5	78.2

Source: North Carolina Department of Health and Human Services

**Table 16 Pregnant of women receiving prenatal care in 1st Trimester 2001-2005**

	Total Receiving Care in 1 <sup>st</sup> Trimester	Black Receiving Care in 1 <sup>st</sup> Trimester	Native American Care in 1 <sup>st</sup> Trimester

	Number	Percent	Number	Percent	Number	Percent
Sampson	3,495	77.2	836	72.4	72	85.7
North Carolina	497,895	83.5	104,823	75.5	6,549	79.6

Source: <http://www.schs.state.nc.us/SCHS/data/databook>, Prenatal Care

**Table 17 Percentage women who smoked during pregnancy**

	1997-1999	2000-2002	2003-2005
Sampson	12.8	11.9	11.7
North Carolina	14.6	13.7	12.4

Source: North Carolina Department of Health and Human Services

**Table 18 Percentage of Women Receiving WIC During Pregnancy**

	1997-1997	2000-2002	2003-2005
Sampson	97.3	79.6	68.0
North Carolina	82.0	73.2	66.0

Source: North Carolina Department of Health and Human Services

## Infant Mortality

The state’s overall infant mortality rate was 8.5 per 1,000 live births from 2001-2005. It had reached an all-time low of 8.2 infant deaths per 1,000 live births between 2002 and 2003. However, Sampson County’s rate still remains above the state average at 9.7 per 1000.

## Low-birth Weight

Low birth-weight refers to babies who are born weighing less than five and a half pounds often too small to be healthy. In 2006, 11,595 babies (or 9.1 percent of all babies) were born low birth-weight in North Carolina. Very low birth-weight refers to babies born weighing less than 3 lbs 5 oz.

**Table 19 Low Birth Weight Number and Percent 2001-2005**

Indicator	Sampson	Sampson Rates	NC	NC Rates
White % Low Birth Weight(<2500 Grams)	260	7.4	32,097	7.4

Minority % Low Birth Weight(<2500 Grams)	175	13.6	28,878	13.4
Total % Low Birth Weight(<2500 Grams)	435	9.6	53,975	9.0
Black % Low Birth Weight(<2500 Grams)	161	13.9	19,711	14.2

Source: <http://www.schs.state.nc.us/SCHS/data/databook>, low birth rate tab

**Table 20 Infant Death Rates per 1000  
2001-2005**

	Total Infant Death	Total Infant Death Rates	Minority Death	Minority Death Rate	White Death	White Death Rate
North Carolina	5,056	8.5	2,404	14.7	2,648	6.1
Sampson County	44	9.7	22	17.1	22	6.8

Source: <http://www.schs.state.nc.us/SCHS/data/databook>, Infant mortality tab

**Table 21 Fetal Death Rates( per 1000) Deliveries  
2001-2005**

	Sampson	NC
Total Fetal Deaths	32	4,245
Total Fetal Deaths Rates	7.0	7.1
White Fetal Deaths	18	2300
White Fetal Death Rates	5.5	5.3
Minority Fetal Deaths	14	1936
Minority Fetal Death Rates	10.8	11.7

Source: <http://www.schs.state.nc.us/SCHS/data/databook>, fetal death tab

**Table 22 Total Birth for 2006**

	Total Births	Age 15-19
All Women	942	150
White	694	100
Minorities	248	50

Source: <http://www.schs.state.nc.us/SCHS/data/databook>



# Child and Adolescent Health

## Child Health

The health and well being of Sampson County children and families is a multi-faceted process including access to early prenatal care, access to health insurance and health care, breastfeeding, good nutrition and good mental health.

**Table 23 2004 Race and Diversity Among Children**

	Total Child Population	White, non-Hispanic	Black, non-Hispanic	Hispanic	Asian	Native American
Sampson	16,074	46.5%	30.2%	19.8%	0.4%	1.9%
North Carolina	2,069,515	60.9%	25.5%	8.5%	1.9%	1.4%

Source: <http://www.schs.state.nc.us/SCHS/data/databook>

**Table 24 2006 Infant and Child Deaths**

	Under 1	Perinatal Condition	Illness	Motor Vehicle	Homicide	Total
Sampson	44	25	10	14	5	73
North Carolina	1,033	557	304	163	65	1,573

Source: <http://www.schs.state.nc.us/SCHS/data/databook>

## Teenage Pregnancy

Data from 2006 shows that the teen pregnancy rate increased slightly from 72.1 pregnancies per 1000 to 85.8 in Sampson County, which is higher than North Carolina rate of 63.1. Among the minorities there has been an increase from 72.5 to 80.8 per 1000 birth (per 1000 females ages 15-19) in 2006. Sampson County is ranked 15<sup>th</sup> among the 100 counties in North Carolina for teen pregnancy.

- Minority teens have the highest teen pregnancy rate among the major racial/ethnic groups in the U.S.
- Minority teens are more likely to be sexually experienced and to have more sexual partners than U.S. teens of other racial/ethnic groups.

**Table 25 2006 Pregnancy Rates, Ages 15-19**

	Total Pregnancies	Rate	White Pregnancies	Rate	Minority Pregnancies	Rate
Sampson	182	85.8	113	83.3	68	89.1
North Carolina	19,192	63.1	10,995	52.9	7,892	82.1

Source: <http://www.schs.state.nc.us/SCHS/data/pregnancies/2006/preg1517.rtf>

**Table 26 2006 Total Pregnancy Rates, Ages 15-17**

	Total Pregnancies	Rate	White Pregnancies	Rate	Minority Pregnancies	Rate
Sampson	73	55.8	44	53.5	29	59.8
North Carolina	6,161	35.1	3,306	28.1	2,757	48.0

Source: <http://www.schs.state.nc.us/SCHS/data/pregnancies/2006/preg1517.rtf>



**Mortality and Other Health Indicators**

## Leading Causes of death in Sampson County

The top three causes of death for Sampson County residents are heart disease, cancer and cerebrovascular disease. Other causes of death that are of concern are diabetes, chronic respiratory disease and kidney disease, which is often related to diabetes and high blood pressure.

**Table 27 2001-2005, Race-Specific & Age-Specific Age-Adjusted Death Rates**

Leading Causes in Sampson	White Male		White Female		Minority Male		Minority Female		OVERALL	
	#	Rate	#	Rate	#	Rate	#	Rate	#	Rate
Diseases of Heart	264	315.1	261	198.4	105	280.3	118	198.2	748	244.0
----Acute Myocardial Infarction	87	101.3	74	57.5	23	61.4	28	48.5	212	69.2
----Other Ischemic Heart Disease	116	134.6	108	80.1	40	108.2	43	71.4	307	100.0
Cerebrovascular Disease	59	74.7	120	89.2	41	109.3	73	119.5	293	96.4
Cancer	258	282.5	186	152	128	337.1	90	162.2	662	213.5
----Colon, Rectum, and Anus	31	35.6	15	12.5	11	29.6	10	18.3	67	21.7
----Pancreas	13	14.3	16	12.8	8	22.1	3	5.4	40	13.2
----Trachea, Bronchus, and Lung	97	100.4	44	36.6	33	83.7	12	21.9	186	59.0
----Female Breast	0	0	26	21.8	0	0	24	42.7	50	28.5
----Prostate	23	31.6	0	0	27	79.3	0	0	50	46.3
Diabetes Mellitus	33	37.1	30	24.2	30	78.4	47	80.3	140	45.3
Pneumonia and Influenza	19	27	26	19.4	11	31.4	9	15	65	21.4
Chronic Lower Respiratory Diseases	53	67.6	52	39.7	19	54.6	10	17.1	134	44.0
Chronic Liver Disease and Cirrhosis	16	17.5	5	4.3	8	18.5	3	5.8	32	10.5

Community Health Assessment

Septicemia	10	10	4	3.1	6	16.6	11	18.1	31	10.1
Nephritis, Nephrotic Syndrome, and Nephrosis	19	21.5	18	13.9	12	34.4	19	32.9	68	22.3
Unintentional Motor Vehicle Injuries	58	54.1	24	23.6	26	57.4	11	21.5	119	38.7
All Other Unintentional Injuries	37	37	29	24.9	16	34.4	12	21.6	94	31.0
Suicide	24	22.1	4	4.2	3	6.7	2	4.2	33	10.6
Homicide	8	7.7	8	7.9	15	30	3	5.6	34	11.1
Alzheimer's disease	15	22.4	40	28.5	1	3.1	5	7.1	61	20.1
Acquired Immune Deficiency Syndrome	3	3	0	0	9	19.7	3	5.9	15	5.0
All Causes	1,042	1190	1,016	796.7	525	1354	535	922.1	3,118	1014.9

Source: <http://www.schs.state.nc.us/SCHS/data/pregnancies/2006/preg1517.rtf>

### Heart Disease

Heart disease is the leading cause of death in North Carolina and the United States for men and women of every race. Each year 22,000 North Carolinians ages 45-64 are hospitalized for a heart attack for the first time. The highest rate of total heart disease was identified among the minority populations with Myocardial Infarction being rated number one.

**Table 28 Age Adjusted Heart Disease Rate (per 100,000)**

	1990-1994	1995-1999	2000-2004
Sampson County	247.7	292.4	245.5
North Carolina	313.6	279.8	233.9

Source: <http://www.schs.state.nc.us/SCHS/data/pregnancies/2006/preg1517.rtf>

### Cancer

Cancer is the second leading of death in Sampson County. Respiratory cancer followed by colon, breast, and prostate cancer are the most common cancers in Sampson County.

The Breast & Cervical Cancer Control Program (BCCCP) educates and informs the community of the importance of early detection and treatment of breast and cervical cancer screenings. The program also offers free mammograms and Pap Smear Tests to women who qualify for the program.

**Table 29 Projected Cancer New Cases and Death, 2007**

	Projected New Cases		Projected Deaths	
	Sampson County	North Carolina	Sampson County	North Carolina
Total	300	40,860	120	16,405

Lung	40	5,550	35	4,680
Breast	45	6,155	10	1,255
Prostate	45	6,420	5	835
Colon/Rectum	30	4,425	10	1,645

Source: <http://www.schs.state.nc.us/SCHS/data/pregnancies/2006/preg1517.rtf>

**Table 30 2001-2005 Cancer Mortality Rates**

	Colon/Rectum		Lung		Female Breast		Prostate		All Cancers	
	Deaths	Rate	Deaths	Rate	Deaths	Rate	Deaths	Rate	Deaths	Rate
Sampson	67	21.7	186	59.2	50	28.3	50	46.6	662	213.4
North Carolina	7,553	18.4	24,856	60.1	6,026	25.6	4,341	30.2	81,428	198.0

Source: <http://www.schs.state.nc.us/SCHS/CCR/cp2007/Sampson.pdf>, Cancer Mortality

## Obesity

The number of Americans who are overweight or obese is increasing to epidemic proportions. The American Heart Association says obesity at all age levels, regardless of race or sex, has increased 33% compared to ten years ago. These trends hold true in North Carolina, where 63% of adults and 16.7% of children between 2 and 18 years of age are overweight or obese. Sampson County trends are worse than state levels, with 66% percent of adults overweight and obese and 19.8 % of children between 2 and 18 years of age overweight. Obesity has been medically linked to a large variety of diseases, including cancer, diabetes, heart disease, high blood pressure and stroke.

### Obesity in Children

In 2004, the community began an attempt to reverse the trends by responding with innovative solutions and community-wide collaborations that are making a positive difference in the lives of people in Clinton. A major goal of the Sampson County Partners for Healthy Carolinians is to address the rising epidemic of childhood and adult obesity. The partnership proposes to address the epidemic through: 1) sponsoring activities for the children of Sampson County to assist them in learning how to make wise nutritional choices and to assist them with adding physical activities to their daily routine and 2) promoting education for the citizens of Sampson County regarding the importance of physical activity and making wise nutritional choices, especially for children. Funds from Healthy Carolinians are used to enhance programs that target the problems of childhood and adulthood obesity and also to enhance the partnership’s ability to provide informational and educational materials to the citizens of Sampson County.

The number of children in Sampson County and the trend of children who are obese or at risk of becoming obese is alarming. Sampson County statistics are well above the state’s number of at-risk children. Medical evidence links obesity to multiple health problems for youth, including juvenile diabetes, blood pressure problems and heart disease.

**Table 31 Prevalence of Children ages 2-20, At-Risk for Overweight and Overweight**

	≥85 <sup>th</sup> -95 <sup>th</sup> Percentile AT- RISK			≥ 95th Percentile Overweight			Total
	#	%	Rank	#	%	Rank	
Sampson County	223	18.3	86	225	20.9	79	1220
North Carolina	18,458	15.9	Ordered	20,150	17.4	Ordered	115,728

Source: [www.ncchild.org](http://www.ncchild.org)

## Diabetes

Diabetes is a serious chronic disease that can be managed through lifestyle changes and medication. Nearly one million North Carolinians have diabetes, and at least one-third do not know that they have it. More than 60% of adults in North Carolina (around 3.65 million) are at some risk of developing diabetes or other chronic diseases. Complications from diabetes can lead to expensive or poor outcomes. For example, kidney failure leads to years of dialysis or poor circulation can cause gangrene, which can lead to amputation or death.

Sampson County mortality rates due to diabetes and its complications is 33.0 per 1000, which is much higher than the state average of 26.0 per 1000.

**Table 32 Residents in Sampson County with Diabetes Conditions**

Conditions	Percent	Estimated number
Never had a diabetes test	26%	12,270
Pre-Diabetes	6.2%	2,550
Undiagnosed Diabetes	2.5%	1,040
Diagnosed Diabetes	8.2%	3,840
Gestational Diabetes	2.8%	330

Source: [http://www.ncdiabetes.org/Facts\\_Figures/Default.asp#County](http://www.ncdiabetes.org/Facts_Figures/Default.asp#County)

**Table 33 Mortality Statistics Summary 2005  
Diabetes Mellitus**

	# of Deaths	Death Rate	# of Deaths 2001-2005	Death Rate 2001-2005
Sampson County	21	33.0	140	45.0
North Carolina	2,255	26.0	11,273	26.7

Source: [http://www.ncdiabetes.org/Facts\\_Figures/Default.asp#County](http://www.ncdiabetes.org/Facts_Figures/Default.asp#County)

**Smoking**

Smoking and the use of smokeless tobacco are responsible for the majority of all cancers of the lung, trachea, bronchus, larynx, pharynx, oral cavity, and esophagus. Smoking is the leading cause of preventable death in the Sampson County.

- 33% of adults are exposed to second hand smoke at work
- Sampson County has two school districts. Clinton City schools are 100% TFS and Sampson County schools are not currently 100% TFS.
- Sampson County has 100% Tobacco Free Hospital
- 23.8% of adults currently smoke cigarettes
- 11.6% of women smoke while pregnant
- Sampson County Health Department and Department of Social Services are tobacco free



**Communicable and Sexual Transmitted Diseases**

## Communicable Disease

Public health came into existence for the purpose of controlling the spread of disease, and disease control has remained one of the prime directives. Vaccination has led to the worldwide eradication of smallpox, and polio may soon disappear completely. Vaccine preventable diseases such as measles, mumps, rubella and pertussis are increasingly rare, although these serious diseases still afflict unprotected Sampson County children every year. The health department is responsible for surveillance of all communicable diseases reported in the county.

In 2006, Sampson County Health Department diagnosed 421 cases of STD. Among the highest rates were Chlamydia and Gonorrhea and 3 new cases of Syphilis. Currently there are more than 119 people living with HIV/AIDS in Sampson County. World AIDS Day is observed annually on December 1<sup>st</sup> to raise awareness of the disease and the global epidemic.

**Table 34 Communicable Diseases Cases, 2006**

	Pertussis	Tuberculosis	Hepatitis(ABC)	Menigitis	Salmonellosis
Sampson	2	2	13	1	17
North Carolina	127	374	364	68	2287

Source: <http://www.epi.state.nc.us/epi/gcdc/tick.html>

**Table 35 Sexually Transmitted Diseases Rates, 2001-2005**

	Syphilis	Gonorrhea	AIDS	Chlamydia
Sampson	.5	19.0	1.1	23.9
North Carolina	.8	18.3	1.2	31.5

Source: <http://www.schs.state.nc.us/SCHS/data/databook/CD17%20syphilis%20rates.html>, Pocket Guide, Morbidity

**Table 36 HIV, Mortality Summary, 2005**

	# of Deaths	Death Rate	# of Deaths 2001-2005	Death Rates 2001-2005
Sampson	2	3.1	15	4.8
North Carolina	414	4.8	2,217	5.3

Source: <http://www.schs.state.nc.us/SCHS/data/databook/CD17%20syphilis%20rates.html>, Mortality

**Table 37 AIDS Cases and Rates per 100,000, 2001-2005**

	Total AIDS Cases	Rates per 100,000
Sampson	35	11.2
North Carolina	5,151	12.2

Source: <http://www.schs.state.nc.us/SCHS/data/databook/CD17%20syphilis%20rates.html>, Morbidity

**Table 38      Gonorrhea/Syphilis Cases and Rates per 100,000 Population  
2001-2005**

		Total Cases	Rate per 100,000	Minority Cases	Rate per 100,000
Gonorrhea	Sampson	592	190.2	487	482.8
	NC	77,371	183.5	63,939	600.1
Syphilis	Sampson	5	1.6	3	3.0
	NC	1,340	3.2	987	9.3

Source: <http://www.schs.state.nc.us/SCHS/data/databook/CD17%20syphilis%20rates.html>, Morbidity

## **Summary of Sampson County Community Health Assessment**

### **Summary of the Sampson County Community Assessment**

Sampson County has performed the 2007 Community Health Assessment with the assistance of the Partners for Healthy Carolinians Task Force and other community partners. The following is a summary of the assessment findings.

### **Overview of the Process of Data Collection:**

The collection of data for the Community Assessment involved multiple collection processes that included:

- A. Focus Groups: consisted of over 100 participants at senior nutrition sites throughout the county and high school students. The focus group meetings were advertised through fliers, word-of-mouth and newspaper articles.
- B. Surveys: Healthy Carolinians Task Force distributed 1100 surveys to various sites throughout the county and 551 were returned. Sampson Regional Medical Center collected 151 surveys for the Healthy Carolinians Task Force and the data was shared with the Task Force. There was 15 Service provider surveys distributed and only 4 were returned.
- C. Secondary data: was also collected from a variety of sources, including the North Carolina Center of Health Statistics, LINC and other sources.

**Data Results:**

After compiling the data from the assessment process, the findings were categorized into four separate areas general community concerns, community health concerns, barriers to health care and community health care needs.

A. Top Ten General Community Concerns:

1. Transportation
2. Employment
3. Crime/ Smoking
5. Drug and Alcohol Abuse
6. Lack of Youth Activities
7. Safe Housing and Neighborhoods
8. Affordable Housing
9. Discrimination
10. Teen Pregnancy

B. Top Ten Community Health Concerns:

1. Diabetes/Heart Disease
3. Cancer
4. High Blood Pressure/Stroke
5. Obesity
6. Lack of Physical Activity (includes not enough safe places to walk)
7. Poor Nutrition Habits
8. Environmental tobacco smoke

10. Immunizations

C. Barriers to Care:

1. Lack of transportation
2. Cost of health care
3. Inability to get an appointment in a timely manner
4. Wait times that were too long at the medical visit
5. Inconvenient hours of operation
6. Lack of information regarding services available
7. Language barriers

D. Community Health Care Needs:

1. Better/ more accessible mental health services/Better/more accessible drug and alcohol treatment centers/services (tied for #1)
3. More health education classes/More community health fairs/More community health screenings /Better education or community awareness of (tied for #3):
  - a. Diabetes
  - b. Cholesterol
  - c. Blood Pressure/Stroke
  - d. Cancer
  - e. Family Planning Services
  - f. Pregnancy Prevention Services
  - g. HIV/AIDS
  - h. Immunizations
7. Assistance with food/utilities payments to allow additional monies to purchase needed medications/medication assistance programs
8. Smoke-Free Environment
9. More availability of dental care
10. Less expensive insurance coverage/additional Medicare/Medicaid assistance

**Healthy Carolinians Objectives:**

After careful review and discussion of all the information obtained from the community assessment, the Partners for Healthy Carolinians Task Force chose to address four health related issues that were cited in the data. The four issues are directly linked to health care concerns for Sampson County residents. They are:

1. Obesity: Obesity has become an epidemic with associated medical risks from the toddler to the elderly. The county's obesity percentage is currently 84 percent. Obesity is not just one simple

disease, but is medically linked to a variety of complications, such as heart disease, diabetes, and cancer. If the goal of decreasing the county's rates of these other diseases is to be met, the problem of obesity must be addressed.

2. Heart Disease: Heart Disease, the number one cause of death in Sampson County, is caused by a variety of factors that include everything from genetics to diet to a sedentary lifestyle. Some of the risk factors, such as genetics must be addressed by health professionals. However, some risk factors, such as sedentary lifestyles and diet can be addressed to help the individual and the community to decrease the heart disease rate in our county.
3. Diabetes: diabetes in our county is an epidemic with current rate 67.6 per 1000 of our population diagnosed or suspected of being diabetic. Many of these diabetics have Type II Diabetes, which can be controlled with the proper diet and exercise. Education, screenings and one-on-one counseling are key components in addressing the rising rate of Diabetes in our county.
4. Smoke-free Environments: Many people are exposed to second-hand smoke in our county and it is not by choice. Although the North Carolina Legislature has passed some laws to help regulate smoking on some buildings, there is still much work to be done. Major education efforts are needed for the public and businesses to help them understand the importance of smoke-free environments for everyone from the youngest to the oldest residents of our county.

### **Action Plans:**

Community action plans have been developed to address each of the issues chosen by the Sampson County Partners for Health Carolinians Task Force. Interventions will include, but not be limited to: educational sessions; assistance with achieving active lifestyles; assistance with learning proper nutritional habits; media campaigns; and website information.

### **Dissemination of the Community Health Assessment Document**

The Sampson County Partners for Healthy Carolinians Task Force will disseminate the document to task force members, community partners, government agencies, stakeholders and the general public with the hope that the information contained in the document will enable various agencies and stakeholders to use the information to assist with meeting the needs of the public and improving and promoting the health and well-being of the citizens of Sampson County.

Dissemination of the Community Health Assessment document will include, but not be limited to:

1. Sampson County Partners for Healthy Carolinians Task Force members.
2. Sampson County Health Department

3. Sampson County Board of Health
4. Sampson County Board of Commissioners.
5. Sampson County government offices
6. Sampson County Public Libraries
7. Sampson Regional Medical Center
8. News articles in the Sampson Independent highlighting the major findings of the assessment.
9. Sampson County website
10. Healthy Carolinians website

### **Summary**

Health issues continue to be a concern for the residents of Sampson County. Access to care is often difficult for residents due to location, transportation, language barriers and community services. The patient-provider ratio is 2,579 persons per physician and 6,769 per dentist. Because of the agricultural climate, most of Sampson County's 946.63 square miles consist of sparsely populated rural communities. Access to care is often difficult due to many factors, including physical size of the county itself. The drive from one end of the county to the other takes over an hour.

# Action Plans

# Appendecies

## **Appendix A: Community Assessment Process**

### **Community Assessment Process**

The data collected by the community health assessment was organized and analyzed by Sampson County Partners for Healthy Carolinians. The issues identified by the analysis, including consideration of the *Healthy People 2010 Objectives*, led to the recommendations for intervention. The health issues which provide significant opportunities for improving the health status of the citizens of our community are: chronic disease prevention and control; substance abuse; mental health; violence and abusive behavior; unintentional injuries; neighborhood health issues; environmental health; maternal and child health; HIV/AIDS; sexually transmitted disease; immunization; and oral health.

- Focus Groups: 10 Nutrition/Senior Sites and 1 high school
- Key Informant Interviews

## Community Health Assessment

- Surveys from Healthy Carolinians, Sampson Regional Medical Center and Service Providers
- Secondary Data from various sources: LINC, Census Bureau, NC SCHS

During the assessment, community service organizations confirmed the need to develop a system to provide timely and useful demographic, environmental, socio-economic, and health status information to a group of diverse users: medical providers; neighborhood groups; service organizations; and other government agencies. Access to the information can directly impact effectiveness and efficiency of community health improvement efforts.

## **Appendix B: Focus Groups**

### **Community Health Assessment Nutrition/Senior Sites Focus Group Final Report**

#### **Focus Groups**

Residents were recruited to take part in the community focus groups through flyers and the Department of Aging. Nine focus groups were held at all the Nutrition/Senior Site in the mornings and one other in the afternoon, one included high school students. There was a total of 87 high school students in grades 9-12 that participated in the focus group. Drugs, gangs and no youth activities were the main issues students felt were major problems. There were over 100 participants at the nutrition sites. . Participants were primarily older adults and well educated; ages ranged from 40 to 88, with an average age of 61 years. Department of Aging staff, Department of Recreation staff and Sampson County Health

Department staff facilitated the groups, one moderated and recorded participants' responses on a flip chart and the other one took notes. Each focus group lasted approximately ninety minutes. The groups were then shown the list of health concerns identified during the process and were given the opportunity to discuss them. They were asked to eliminate any of the concerns that were felt didn't really apply to their community and to suggest other concerns that didn't appear on the first list. After further discussion, participants were given three colored sticky pads and asked to write down issues they felt were most important. All of the information gathered was then tabulated.

### ***Overview***

The purpose of focus groups was to collect information about the community from the Nutrition/Senior sites throughout Sampson County and from high school students. With a collaboration of Sampson County Health Department, Department of Aging, and Department of Parks and Recreation there were ten forums held that covered information that will be used to set priorities for the Community Health Assessment. Questions asked were; What issue do you feel affect your community? What do you consider to be a major health concern for your community? ; What services would you like to see in your community to improve health for your family, friends, and neighbors? Has there been a time when you needed to see a doctor but didn't and Why?; and How do you meet your basic housing, nutrition, and health care needs?. Each question was asked at each site. The majority of the attendees were minorities with an age range from 40-88 years. The purpose of separating each forum is to get a general idea of how each area of the county may have different issues.

### **Open Forum Results**

***Garland Nutrition Site-*** There were 37 community members that attended the focus group. The top three health concerns at this nutrition site were diabetes, heart disease and arthritis. It was an open forum discussion and the participants were eager with comments and suggestion. The top three issues affecting their community are drugs, crime, and stray dogs. There is a limited supply of services that concerned the participants such as food programs,, transportation, and medical screenings (diabetes, cholesterol and blood pressure). Other issues were the availability of a regular physician, affordability and transportation to the physician's office. Maintaining basic housing, nutrition, and health care needs were considered unpredictable due to limited finances. Many participants stated they were often faced with the decision to buy food or buy medicine or pay utilities.

***Coharie Tribal Center*** - Is a predominantly Native American center that provides community services throughout Sampson County. In this forum, some issues were of funding and meals for the

## Community Health Assessment

elderly. Issues affecting the community were drugs, transportation, high school drop outs and gangs. Health concerns were cancer, diabetes, Alzheimer's, and childhood obesity. The question was asked what can be added to improve the services in your community and the responses were transportations and meals. The availability of a physician care was limited due to no insurance, no money, and lack of transportation. Many elders are also stated they were often faced with the decision to choose between medication, health care, or food.

**County Auditorium (Butler Court)** – The seniors were residents of Butler Court and other senior citizens of Sampson County. They were asked the same questions concerning health care, issues and services in their community. Issues that affect the community are drugs; gangs; prostitution; vandalisms; feathers from trucks; old run down homes and buildings; and teen pregnancy. Major health concerns for the community are insects (mosquitoes and flies); brown water; ants; diabetes; high blood pressure; and old ponds. Services needed to improve the health of the community were transportation; home improvement programs; general information; and weatherization programs. Access to health care is also a service that has limitations due to transportation, cost, outstanding bills, no insurance, and availability of the doctor. Meeting the basic housing needs was also considered to be a problem. Services such as sliding fee scale, food stamps, social security and payment plans, VA and SSI benefits are how they meet some of their needs.

**Mingo Nutrition Site-** Concerns within the community of Mingo were drugs/gangs, junk cars, safety and stray dogs. Major health concerns included co-pays and deductibles, high cost of health care, diabetes, arthritis and cancer. Services needed in this community were earlier flu shots and Diabetes clinic at the Health Department, and more days and time for arthritis classes.

**Plaza Apartment** - This is an apartment complex for seniors and disabled adults that have a Community Coordinator who provides minimal services for the residents. Even though this community has a coordinator; the residents are limited to the services are provided. Issues affecting this community are: drugs, loud noises, bad water, and lack of affordable housing. Health concerns in their neighborhood consist of: nutrition, blood pressure, diabetes, arthritis, cancer, and Alzheimer's. The types of services that this community would like to see improved are: transportation, medical screening, more food banks, and mental health. The residents felt that the availability of doctors in this community is limited and there are times when someone needs to see a doctor but can not due to money, over booking, inexperienced staff or transportation.

**Roseboro Center** – The issues that are of concern to the Roseboro community are community watch, HIV/AIDS awareness, crime, water smell, no street signs or roads signs, and stray cats and dogs. Health concerns are diabetes, arthritis, high blood pressure, cholesterol, cancer, and heart problems. Services that are needed in this community are health fairs (churches and centers) and clean yard. Transportation is also an issue for residents in this part of Sampson County.

**Turkey Nutrition Site** – This nutrition site is located in the eastern part of Sampson County. The issues that identified were teen pregnancy, speeding on HWY 24, drugs, crime, gangs, trash in the

neighborhood, loud music and vandalism. Health concerns are a major issue which includes knee problems, diabetes, high BP, fire ants, mosquitoes, and AIDS. The services they would like to see in their neighborhood are more education classes, and cholesterol and diabetes screening. Transportation to these services is also an issue for the residents in this part of the county. Money, fear, and lack of transportation are a few of many reasons a doctor visit was cancelled or postponed. The essential requirements for basic housing needs are met with these sources SSI, SSDI, food stamps, pension and retirement.

**Westbrook-** Is located in the northern part of Sampson County between Newton Grove and Spivey's Corner. Issues that affect their community are crime, medical screening, home maintenance and short trips through the nutrition site. Major health issues are diabetes, heart disease, cancer, and arthritis. Services that are needed by the community are home maintenance programs, transportation (short trips) and home meals. Many basic housing and nutrition needs are met through church support and family support.

**Clement Nutrition Site-** The health issues identified at the Clement site are: diabetes, arthritis, high cholesterol, and cancer. Services that are greatly needed in this community are medical screening (glucose and cholesterol), more senior trips, and better meals on wheel services. Their basic housing needs are met through family financial support, SSI, SSDI, retirement, and pension.

**Harrells Nutrition Center-** Harrells considers stray cats and dogs, reckless drivers, mosquitoes, pest control, un-even pavement, beavers, road maintenance and pot holes at the nutrition site to be the most important concerns in the community. The most important health concerns are: emergency services are too far from Harrells, age of the community, diabetes, high blood pressure, affordable health care and widows left without help from the community.

**Clinton High School Students-** There were many areas that the students thought needed much improvement is needed. Drugs (legal and illegal), underage drinking and gangs in school and in the community are concerns that many students find disturbing. Every student raised their hand when asked about fun things to do in Sampson County. Students felt there was a major lack of activities for children and teens. They also expressed concerns regarding the lack of safe places where they could "hang out".

### **Summary**

The three main ways people learned about the focus groups were through a friend, at church, and through newspaper coverage. People enjoyed the discussion sessions, seeing the community come together, and felt that the topics chosen were informative and educational. The majority of people felt that there needed to be more time for the discussion sessions, and a larger room. A debriefing with Forum Planning Committee members was held a week after the event. Members reported that participants wanted more time for the discussion sessions. They interpreted the request for more time as an indication of strong public interest in the chosen topics.

**Appendix C: Survey Tools**

## **Community Health Assessment Survey Tools**

### **Public Survey**

Surveys asking about residents' perceptions of issues and health problems were distributed to various agencies through the Sampson County Partners for Healthy Carolinians Task Force members and other community agencies. For each issue, individuals could respond "this is not a problem", "this is a problem". Five hundred and fifty responses were received. Again, those completing and returning the survey tended to be younger adults, with 48% between the ages of 25-44. Eighty percent of survey responders were female, and 18% were male. Below is a copy of the survey in English and Spanish.

Sampson Regional Medical Center also conducted a survey and shared the information with the Community Health Assessment Committee, a copy of the survey is also included.

**Sampson County Partners**



**For Healthy Carolinians**

**Sampson County  
Community Health Assessment Survey**

This survey is part of the community health assessment currently in progress in Sampson County. Community health assessment is the process of learning about the health status of our community. We will use this information to identify needs/concerns about our community and then develop ways to address those needs. ***This survey is anonymous. DO NOT put your name on the survey.***

**1. What is your gender? (check one)**

Female     Male

**2. What is your current age? (check one)**

- 18-24 years                       45-54 years  
 25-34 years                       55-64 years  
 35-44 years                       65-74 years  
 75 or older

**3. What is your marital status? (check one)**

- Married                               Divorced  
 Separated                           Single never married  
 Widowed

**4. What is your race/ethnicity? (check one)**

- Black/African American                       White/Caucasian  
 American Indian                               Hispanic/Latino  
 Asian/Pacific Islander                       Other: \_\_\_\_\_

**5. What is the highest level of education you have completed? (check one)**

- Less than 12<sup>th</sup> grade  
 High School graduate or equivalent (GED)  
 Vocational Training  
 Associate Degree  
 Bachelors Degree  
 Masters Degree/Doctorate

**6. What is your employment status? (check one)**

- Employed Full time                       Employed Part-time  
 Unemployed                               Student  
 Retired                                       Disabled  
 Homemaker

**7. . What is your total household income? (check one)**

- Under \$10,000                       \$40,000-\$49,999  
 \$10,000-\$19,999                       \$50,000-\$59,999  
 \$20,000-\$29,999                       \$60,000-\$69,999  
 \$30,000-39,999                       Over \$70,000

**8. Does your community have a problem with any of the issues listed below? (check all that apply)**

Living in Our Community	No Problems	Problems
Affordable, safe housing		
Employment opportunities		

Quality education (K-12)		
Water supply and quality		
Racial and ethnic discrimination		
Legal services		
Crime		
Air quality		
Animal control		
Public transportation		
Solid waste disposal		
Smoking in public places		

**9. In your opinion, are you aware of the issues listed below in your community? (check all that apply)**

<b>Issues</b>	<b>No Problem</b>	<b>Problem</b>
Alcohol abuse		
Illegal drug use/substance abuse		
Tobacco use		
Driving/riding in a car without seatbelt		
Homelessness		
Sexually transmitted disease(STD)		
Poor eating habits		
Lack of physical activity		
Family violence		

Child abuse		
Juvenile delinquency		
Suicide		
Work safety		
Youth access to and use of weapons		
Teen pregnancy		
Youth activities		
Crime		

**10. Do people in your community have a problem finding/using these services? (check all that apply)**

	No	
--	----	--

<b>Health and Human Services</b>	<b>Problem</b>	<b>Problem</b>
Routine health care		
Hospital services		
Dental care		
Mental health/counseling		
Emergency medical care		
Pharmacy/drug stores		
Drug and Alcohol treatment		
Health education/ promotion programs		
Enrolling in Medicare/Medicaid		
Food assistance		
Medical equipment		
Housing assistance		
Help with electricity, fuel, or water bills		
Long term care facilities		
Care for pregnant women		
Childhood immunization		
After school care		
Childcare for infants and preschoolers		
Car seats for infant and children		
Children enrolled in Health Choice		

**11. Why do you think people may not use the services in question #10? (check all that apply)**

	<b>No</b>	
--	-----------	--

Barriers to Services	Problem	Problem
Cost of services		
Lack of information		
Lack of transportation		
Inconvenient times		
Lack of childcare		
Inconvenient location		
Wait too long for services		
Concerns about confidentiality		
Language barriers		
Prior bad experience		
Unfriendly staff		
Lack of handicap access		
Racial/ethnic discrimination		
Overall bad quality of care		

12. What county do you most often visit when you are sick or need medical care?

Harnett       Duplin       Cumberland       Bladen  
 Wayne       Pender       Johnston       Sampson

13. How many days a week do you get at least 30-60 minutes of physical activity?

None       1       2       3       4       5 or more

14. On average, how many times per week do you eat at a fast food restaurant?

Less than 1       2       3       4       5 or more

15. How do you rate your own personal health?

Excellent     Good       Fair       Poor

Comments/Concerns \_\_\_\_\_  
 \_\_\_\_\_  
 \_\_\_\_\_  
 \_\_\_\_\_

## Condado Sampson



## Encuesta Comunitaria de Salud

Esta encuesta es parte de la evaluación de salud que actualmente esta en progreso en la comunidad del Condado Sampson. Las encuestas de salud en la comunidad son un proceso de aprendizaje sobre el estado de salud de nuestra comunidad. Usaremos esta información para identificar necesidades o preocupaciones sobre nuestra comunidad y luego desarrollar estrategias para resolver estas necesidades. **Esta encuesta es anónima. No escriba su nombre en la encuesta.**

**1. ¿Cuál es su género? (marque uno)**

Masculino  Femenino

**2. ¿Cuál es su edad? (marque uno)**

18-24 años  45-54 años

25-34 años  55-64 años

35-44 años  65-74 años

75 o mayor

**3. ¿Cuál es su estado civil? (marque uno)**

Casado  Divorciado

Separado  Soltero (No casado)

Viudo

**4. ¿Cuál es su raza? (marque uno)**

Negro/Africano  Blanco/Caucásico

Indio Americano  Hispano/Latino

Isleño asiático/pacífico  Otro: \_\_\_\_\_

**5. ¿Cuál es el nivel educativo más alto que usted ha completado? (marque uno)**

Primaria

Secundaria

Bachillerato (preparatoria) o equivalente (GED)

Escuela técnica

Colegiatura

Maestría o Doctorado

**6. ¿Cuál es su estado de empleo? (marque uno)**

Empleado a tiempo completo

Empleado de medio tiempo

Estudiante  Desempleado

Retirado  Discapacitado

Ama de casa

**7. ¿Cuáles son sus ingresos anuales? (marque uno)**

- |  |  |
|--|--|
| <input type="checkbox"/> Menos de 10,000 dólares | <input type="checkbox"/> \$40,000-\$49,999 |
| <input type="checkbox"/> \$10,000-\$19,999       | <input type="checkbox"/> \$50,000-\$59,999 |
| <input type="checkbox"/> \$20,000-\$29,999       | <input type="checkbox"/> \$60,000-\$69,999 |
| <input type="checkbox"/> \$30,000-39,999         | <input type="checkbox"/> Mayor de \$70,000 |

**8. ¿Tiene su comunidad alguno de los problemas listados a continuación? (marque todos los que apliquen)**

—

<b>Viviendo en Nuestra Comunidad</b>	<b>Ningún Problema</b>	<b>Problemas</b>
Vivienda segura y razonable		
Oportunidades de Empleo		
Educación de Calidad (K-12)		
Suministro de agua de calidad		
Discriminación racial y étnica		
Servicios Legales		
Crimen		
Calidad de Aire		
Control de animales		
Transportación Publica		
Disposición de desperdicios sólidos		
Fumar en lugares públicos		

**9. En su opinión, ¿sabe si alguno de los problemas listados a continuación existen en su comunidad? (marque todos los que apliquen)**

<b>Problemas</b>	<b>Ningún Problema</b>	<b>Problemas</b>
Abuso de alcohol		
Uso de drogas ilegales o abuso de sustancias controladas		
Uso de tabaco		
Manejar sin usar el cinturón de seguridad		
Falta de viviendas		
Enfermedades de transmisión sexual (STD)		
Malos hábitos alimenticios		
Falta de actividad física		
Violencia Familiar		
Abuso Infantil		
Delincuencia Juvenil		
Suicidio		
Seguridad en el Trabajo		
Jóvenes teniendo acceso a armas de fuego		
Adolescentes embarazadas		
Actividades Juveniles		
Crimen		

**10. La gente en su comunidad, ¿tiene problemas en encontrar y utilizar estos servicios? (marque todos los que apliquen)**

<b>Salud y Servicios Humanos</b>	<b>Ningún Problema</b>	<b>Problemas</b>
Asistencia médica rutinaria		
Servicios de hospital		
Cuidado dental		
Salud mental / consejería		
Asistencia médica de emergencia		
Farmacia/Farmacias		
Tratamientos para drogadictos y alcohólicos		
Educación en programas de salud		
Inscribirse en Medicare/Medicaid		
Estampillas de alimentas		
Equipo médico		
Ayuda para vivienda pública		
Ayuda con electricidad, gasolina, o cuentas de agua		
Instalaciones de cuidado a largo plazo		
Cuidado para mujeres embarazadas		
Vacunación de niños		
Cuido después de horas escolares		
Cuido para infantes y pre-escolares		
Asientos protectors para niños		
Inscribir niños en el programa Health Choice		

**11. ¿Por qué piensa usted que la gente no puede usar los servicios en la pregunta #10? (marque todos los que apliquen)**

<b>Barreras a Servicios</b>	<b>Ningún Problema</b>	<b>Problemas</b>
Costos de servicios		
Falta de información		
Falta de transporte		
Tiempos inoportunos		
Carencia de servicios en cuidado de niños		
Ubicación inconveniente		
Esperar demasiado por los servicios		
Preocupaciones sobre la confidencialidad		
Barreras en el idioma		
Malas experiencias		
Personal poco amistoso		
Carencia de acceso para discapacitados		
Discriminación racial/étnica		
Mala calidad de los servicios		

**12. ¿Qué condado usted visita con más frecuencia cuando está enfermo o necesita la ayuda médica?**

Harnett  Duplin  Cumberland  Bladen  
 Wayne  Pender  Johnston  Sampson

**13. ¿Cuántos días en la semana usted dedica como mínimo de 30-60 minutos en actividades físicas?**

Ninguno  1  2  3  4  5 o más

**14. En promedio, ¿cuántas veces por semana come usted en un restaurante de comida rápida?**

Menos de 1  2  3  4  5 o más

**15. ¿Cómo usted evalúa su salud personal?**

Buena  Excelente  Pobre

## **Appendix D: Survey Tool Results**

**The results of the survey are as follow:**

## Community Health Assessment

### CHA1 GENDER

1=Female      2=Male

Code	Response Item	Frequency	Percent
1	Female	321	80%
2	Male	72	18%

### CHA2 Current Age

1=18-24      2=25-34  
 3=35-44      4=45-54  
 5=55-64      6=65-74  
 7=75 or older

Code	Response	Frequency	Percent
1	18-24	69	17%
2	25-34	116	29%
3	35-44	75	19%
4	45-54	45	11%
5	55-64	44	11%
6	65-74	21	5%
7	75 or older	18	4%

### CHA3 MARITAL STATUS

1=Married      4=Divorced      5=single/never married  
 2=Seperated  
 3=Widowed

Code	Response	Frequency	Percent
1	Married	195	49%
2	Seperated	27	7%
3	Widowed	25	6%
4	Divorced	45	11%
5	Single	104	26%

### CHA4 RACE

1=Black      2=Indian  
 3=Asian      4=White  
 5=Hispanic      6=Other

Code	Response	Frequency	Percent
1	Black	93	23%
2	Indian	31	8%
3	Asian	0	
4	White	194	48%
5	Hispanic	78	19%
6	Other	3	1%

### CHA5 EDUCATION

1= > 12th Grade  
 2=HS/GED  
 3=Voc Tech  
 4=AS Degree  
 5=BS Degree  
 6= MS Degree

Code	Response	Frequency	Percent
1	> 12th	66	16%



Code	Response	Frequency	Percent
0	no problem	245	61%
1	problem	78	19%

**CHA8D Living\_Water**

Code	Response	Frequency	Percent
0	no problem	251	63%
1	problem	67	17%

**CHA8E Living\_Discrimination**

Code	Response	Frequency	Percent
0	no problem	221	55%
1	problem	99	25%

**CHA8F Living\_Legal\_Services**

Code	Response	Frequency	Percent
0	no problem	243	61%
1	problem	72	18%

**CHA8G Living\_Crime**

Code	Response	Frequency	Percent
0	no problem	197	49%
1	problem	121	30%

**CHA8H Living\_Air\_Quality**

Code	Response	Frequency	Percent
0	no problem	246	61%
1	problem	74	18%

**CHA8I Living\_Animal\_Control**

Code	Response	Frequency	Percent
0	no problem	241	60%
1	problem	75	19%

**CHA8J Living\_Public\_Transportation**

Code	Response	Frequency	Percent
0	no problem	195	49%
1	problem	125	31%

**CHA8K Living\_Waste\_Disposal**

Code	Response	Frequency	Percent
------	----------	-----------	---------

0	no problem	252	63%
1	problem	62	15%

**CHA8L Living\_Public\_Smoking**

Code	Response	Frequency	Percent
0	no problem	206	51%
1	problem	121	30%

**CHA9A Issue\_Alcohol\_Abuse**

Code	Response	Frequency	Percent
0	no problem	155	39%
1	problem	172	43%

**CHA9B Issue\_Illegal\_Drug\_Use**

Code	Response	Frequency	Percent
0	no problem	135	34%
1	problem	209	52%

**CHA9C Issue\_Tobacco**

Code	Response	Frequency	Percent
0	no problem	155	39%
1	problem	177	44%

**CHA9D Issue\_Unbelted-MV**

Code	Response	Frequency	Percent
0	no problem	173	43%
1	problem	155	39%

**CHA9E Issue\_Homelessness**

Code	Response	Frequency	Percent
0	no problem	221	55%
1	problem	98	24%

**CHA9F Issue\_STD**

Code	Response	Frequency	Percent
0	no problem	185	46%
1	problem	132	33%

**CHA9G Issue\_Poor-Eating**

Code	Response	Frequency	Percent
0	no problem	153	38%
1	problem	170	42%

**CHA9H Issue\_Lack\_of\_Physical\_Act**

Code	Response	Frequency	Percent
0	no problem	148	37%
1	problem	180	45%

**CHA9I Issue\_Family\_Violence**

Code	Response	Frequency	Percent
0	no problem	191	48%
1	problem	128	32%

**CHA9J Issue\_Child\_Abuse**

Code	Response	Frequency	Percent
0	no problem	200	50%
1	problem	109	27%

**CHA9K Issue\_Juvenil\_Delinquency**

Code	Response	Frequency	Percent
0	no problem	187	47%
1	problem	130	32%

**CHA9L Issue\_Suicide**

Code	Response	Frequency	Percent
0	no problem	237	59%
1	problem	67	17%

**CHA9M Issue\_Work\_Safety**

Code	Response	Frequency	Percent
0	no problem	234	58%
1	problem	73	18%

**CHA9N Issue\_Weapon\_Access**

Code	Response	Frequency	Percent
0	no problem	195	49%
1	problem	130	32%

**CHA9O Issue\_Teen\_Pregnancy**

Code	Response	Frequency	Percent
0	no problem	160	40%
1	problem	166	41%

**CHA9P Issue\_Youth\_Activities**

Code	Response	Frequency	Percent
0	no problem	161	40%
1	problem	168	42%

**CHA9Q Issue\_Crime**

Code	Response	Frequency	Percent
0	no problem	174	43%
1	problem	182	45%

**CHA10A HHS\_Routine\_Health\_Care**

Code	Response	Frequency	Percent
0	no problem	226	56%
1	problem	96	24%

**CHA10B HHS\_Hospital\_Services**

Code	Response	Frequency	Percent
0	no problem	233	58%
1	problem	96	24%

**CHA10C HHS\_Dental\_Care**

Code	Response	Frequency	Percent
0	no problem	230	57%
1	problem	102	25%

**CHA10D HHS\_Mental\_Health**

Code	Response	Frequency	Percent
0	no problem	219	55%
1	problem	100	25%

**CHA10E HHS\_Emergency\_Care**

Code	Response	Frequency	Percent
0	no problem	238	59%
1	problem	90	22%

**CHA10F HHS\_Pharmacy**

Code	Response	Frequency	Percent
0	no problem	255	64%
1	problem	68	17%

**CHA10G HHS\_Drug\_Treatment**

Code	Response	Frequency	Percent
------	----------	-----------	---------

0	no problem	215	54%
1	problem	102	25%

**CHA10H HHS\_Health\_Education**

Code	Response	Frequency	Percent
0	no problem	215	54%
1	problem	102	25%

**CHA10I HHS\_Medicaid/Medicare\_Enrollment**

Code	Response	Frequency	Percent
0	no problem	221	55%
1	problem	93	23%

**CHA10J HHS\_Food\_Assistance**

Code	Response	Frequency	Percent
1	no problem	235	59%
0	problem	79	20%

**CHA10K HHS\_Medical\_Equipment**

Code	Response	Frequency	Percent
0	no problem	242	60%
1	problem	72	18%

**CHA10L HHS\_Housing\_Assistance**

Code	Response	Frequency	Percent
0	no problem	222	55%
1	problem	88	22%

**CHA10M HHS\_Utility\_Assistance**

Code	Response	Frequency	Percent
0	no problem	216	54%
1	problem	94	23%

**CHA10N HHS\_Longterm\_Care-Facilities**

Code	Response	Frequency	Percent
0	no problem	229	57%
1	problem	79	20%

**CHA10O HHS\_Prenatal\_Care**

Code	Response	Frequency	Percent
0	no problem	246	61%
1	problem	64	16%

**CHA10P HHS\_Childhood\_Immunization**

Code	Response	Frequency	Percent
0	no problem	250	62%
1	problem	54	13%

**CHA10Q HHS\_Afterschool\_Care**

Code	Response	Frequency	Percent
0	no problem	224	56%
1	problem	81	20%

**CHA10R HHS-Child\_Care**

Code	Response	Frequency	Percent
0	no problem	229	57%
1	problem	76	19%

**CHA10S HHS\_Child\_Car\_Seats\_Availability**

Code	Response	Frequency	Percent
0	no problem	233	56%
1	problem	72	18%

**CHA10T HHS\_Child\_Health\_Choice\_Enrollment**

Code	Response	Frequency	Percent
0	no problem	243	61%
1	problem	61	15%

**CHA11A Barriers\_Cost\_Of-Service**

Code	Response	Frequency	Percent
0	no problem	106	26%
1	problem	198	49%

**CHA11B Barriers\_for\_Information**

Code	Response	Frequency	Percent
0	no problem	127	32%
1	problem	190	47%

**CHA11C Barriers\_for\_Transportation**

Code	Response	Frequency	Percent
0	no problem	119	30%
1	problem	193	48%

**CHA11D Barriers\_Incovenient\_Time**

Code	Response	Frequency	Percent
0	no problem	160	40%
1	problem	134	33%

**CHA11E Barriers\_Lack\_of\_Childcare**

Code	Response	Frequency	Percent
0	no problem	166	41%
1	problem	129	32%

**CHA11F Barriers\_Inconvenient\_Location**

Code	Response	Frequency	Percent
0	no problem	186	46%
1	problem	104	26%

**CHA11G Barriers\_Wait\_Time**

Code	Response	Frequency	Percent
0	no problem	129	32%
1	problem	174	43%

**CHA11H Barreirs\_Confidentiality**

Code	Response	Frequency	Percent
0	no problem	179	45%
1	problem	113	28%

**CHA11I Barriers\_Language**

Code	Response	Frequency	Percent
0	no problem	164	41%
1	problem	139	35%

**CHA11J Barriers\_Prior\_Bad-Experience**

Code	Response	Frequency	Percent
0	no problem	169	42%
1	problem	128	32%

**CHA11K Barriers\_Unfriendly\_Staff**

Code	Response	Frequency	Percent
0	no problem	193	48%

1 problem 101 25%

**CHA11L Barriers\_No\_Handicap\_Access**

Code	Response	Frequency	Percent
0	no problem	213	53%
1	problem	77	19%

**CHA11M Barriers\_Discrimination**

Code	Rresponse	Frequency	Percent
0	no problem	187	47%
1	problem	104	26%

**CHA11N Barreirs\_Bad-Quality\_of-Care**

Code	Response	Frequency	Percent
0	no problem	201	50%
1	problem	84	21%

**CHA12 County\_Visited\_for\_Medical\_Care**

Code	Response	Frequency	Percent
1	Harnett	14	3%
2	Duplin	3	1%
3	Cumberland	34	8%
4	Bladen	3	1%
5	Wayne	12	3%
6	Pender	1	0%
7	Johnston	1	0%
8	Sampson	297	74%

**CHA13 Physical\_Activity\_30-60\_Minutes**

Code	Response	Frequency	Percent
0	none	45	11%
1	1day	48	12%
2	2days	76	19%
3	3days	74	18%
4	4days	33	8%
5	5 or more	89	22%

**CHA14 Eat\_Fast\_Food\_**

Code	Rresponse	Frequency	Percent
0	> than 1	58	14%

1	1	60	15%
2	2	107	27%
3	3	81	20%
4	4	32	8%
5	> than 5	36	9%

**CHA15 Rate\_Personal\_Health**

Code	Response	Frequency	Percent
1	poor	14	3%
2	fair	107	27%
3	good	205	51%
4	excellent	8	2%

**Appendix E: Survey Tool- Sampson Regional Medical Center**

## Sampson County Needs Assessment 2007

*Please complete the questions below and return to:*

**Sampson Regional Medical Center, PO Box 260, Clinton, NC 28329**

1. In your opinion, what do most people die from in your community? (*Check (✓) only one*)  
 Heart Disease/Stroke       Diabetes       HIV/AIDS/STDs       Homicide  
 Asthma       Cancer       Motor Vehicle Deaths  
 Other \_\_\_\_\_
2. In your opinion, what is the biggest health issue of concern in your community? (*Check (✓) only one*)  
 Teen Pregnancy     Mental Health       Drug/Alcohol Abuse     Obesity       Tobacco Use  
 Other \_\_\_\_\_  
 Dental Health       Vehicle Crashes       Gangs/Violence       Asthma       Child Abuse
3. In your opinion, what do you think keeps people in your community from seeking medical treatment? (*Check (✓) all of the boxes that apply*)  
 Transportation or health services too far away  
 No appointments available at doctor when needed/Have to wait too long at doctor's office  
 Lack of insurance/unable to pay for doctor's visit  
 Fear (not ready to face health problem)       Other \_\_\_\_\_
4. Do you feel any of the factors listed below affect the health care you or people in your community receive? (*Check (✓) all of the boxes that apply*)  
 A person's age       A person's sex       Other \_\_\_\_\_  
 A person's race       A person's income or insurance status
5. In your opinion, do you feel people in your community lack the funds for any of the following: (*Check (✓) all that apply*)  
 Food       Medicine       Transportation       Health Insurance
6. What would you like to see more of in your community to improve the health of your family, friends, and neighbors. (*Check (✓) all that apply*)  
 Healthier Food Choices       Safe Places to Walk/Play       Job Opportunities  
 Wellness Screens       Tobacco-free Places       Other \_\_\_\_\_
7. What screenings or classes would you like to see more of in your community? (*Check (✓) all that apply*)  
 Breast Cancer       Prostate Cancer       Vaccinations  
 HIV/Syphilis       Family Planning       Cholesterol/Blood Pressure/Diabetes       Other \_\_\_\_\_
8. Do you support tobacco-free public places/buildings in Sampson County? (*Check (✓) only one*)  
 Yes, in all public places/buildings       Yes, but not all public places/buildings  
 No, tobacco use should be allowed in all public places/buildings

## **Appendix F: SRMC Survey Results**

### **Results from Sampson Regional Medical Center Survey**

#### **What do most people die from in your community**

1. Heart Disease/Stroke
2. Cancer
3. Motor Vehicle Deaths
4. Diabetes
5. HIV/AIDS

**Health Concerns**

1. Drug/Alcohol Abuse
2. Obesity
3. Mental Health
4. Teen Pregnancy
5. Tobacco Use

**What keep people from seeking medical care**

1. Lack of insurance
2. No appointments available/ Long wait time
3. Fear
4. Lack of transportation/ Health services too far

**Factors that affect health care in your community**

1. Income/Insurance status
2. Age/Race
3. Gender

**Community Services Needed**

1. Health Insurance
2. Medicine
3. Transportation
4. Food

**Community Improvement Needed**

1. Safe place to walk/play
2. Wellness screening
3. Job opportunities
4. Tobacco-free places
5. Healthier food choices

**What Screening/Classes are needed**

1. Cholesterol/Blood pressure/Diabetes

2. Breast cancer
3. Prostate cancer
4. Family Planning
5. Vaccinations
6. HIV/Syphilis

**Support Tobacco-free public places/buildings**

1. Yes = 96%
2. No = 17%
3. Yes (not all public places) = 31%

**Gender**

1. Female 79%
2. Male 19%

**Age**

1. Under 25 4%
2. 25-34 17%
3. 35-44 24%
4. 45-54 26%
5. 55-64 17%
6. 65-74 6%
7. over 75 3%

**Race**

1. African-American 13%
2. Caucasian 81%
3. Native American 3%
4. Hispanic 1%

**Currently have insurance**

1. Yes 89%
2. No 3%

**Which town/city do you reside**

1. Clinton 51%
2. Newton Grove 11%
3. Roseboro 6%
4. Clement 3%
5. Garland 2%
6. Herring 2%
7. Harrells 1%
8. Spivey's Corner 1%
9. Turkey 1%
10. Ingold >1%
11. Autryville >1%
12. Ivanhoe >1%
13. Salemburg >1%

**Appendix G: Provider Survey**

Surveys were also conducted with service providers in the county. The survey and results are as follows. The interview subjects were asked to describe the services provided by their agency, the population they served, barriers that community members faced when attempting to access those services, and what the agencies did to help their clients access their services. Respondents were also asked general opinion-type questions about Sampson County as a whole. These questions were about services that were needed and about the county's strengths and challenges it was facing. The complete interview script appears in the Appendix of this document.

**A. *Provider's Role***

1. What is your title and role within your organization?
2. Do you consider yourself a Service Provider or a Community Member, or both?

**B. *Agency Services***

3. What are the most popular services that your agency provides?
4. Who in the community most often uses your agency's services? (*Probe: are there particular groups within the community who your agency targets, or who use your services more than others?*)
5. Who in the community has need for your services but is not being reached? (*Probe: Are there people who aren't being served promptly? Why do you think that might be?*)
6. Thinking about the needs you have identified, are there specific services that are currently not offered by your agency that you would like to implement?
7. What services that your agency provides are not fully taken advantage of?
8. What other agencies do you work with? (*Probe: What types of interactions do you have with them?*)
9. What does your agency do to meet the cultural and language needs of people who use your services? (*Probe: What about the needs of people with disabilities or other limitations?*)
10. How is your organization funded? (*Probe: How certain is your funding in the future?*)
11. How are the programs in your organization evaluated?
12. How do those evaluations impact your agency's work?

**C. *Assets in the Community***

13. What programs, resources, or agencies (other than yours) are available for people to use in order to be healthy in this community? (*Probe: Which are used most? Which make the most impact on the community?*)

**D. *Health Needs of the Community***

14. Thinking now about the larger community, beyond your organization's work, what are the two most important health problems that you perceive in this community?

15. How does your agency plan to help address those needs?

16. What are the biggest barriers that people face to accessing health services in the community at large? (*probe: access, transportation, insurance, provision of services*)

17. Are there specific groups of people in the community who you feel face particular challenges related to health? (*probe: youth, families, elderly*)

**E. *Addressing Challenges and Making Decisions***

18. Tell me about community involvement in your agency's decision making.

19. How have community members addressed their community's health needs?

20. If you were going to address a health-related challenge in the community, whom would you try to involve in order to be successful? (*probe: individuals, organizations/agencies*)

## **Appendix H: Provider Survey Final Report**

### **Provider Survey Final Report**

#### **A. Provider's Role**

- Extension Agent - Family and Consumer Sciences
- Education Director

- Hospice Volunteer Coordinator
- Health Director

**B. Agency Services**

- Maternal Health
- Family Planning
- Women, Infant, and Children (WIC)
- Skilled Nursing Visits
- Social Work Visits
- CNA Visits
- Education ( Nutrition and Physical Activity)
- Acute Care
- Skilled Nursing Services
- ER Care

**C. Assets in the Community**

- Information are made available through web pages
- Department of Aging
- Department of Social Services
- Health Department
- Home Health Agencies
- Canter for Health and Wellness Center
- Library
- Cancer Center
- Pharmacies
- Private Medical Offices
- City and County Parks and Recreation
- Healthy Carolinians

**D. Health Needs of the Community**

- Overweight/Obesity
- Smoking
- Heart Diseases
- Diabetes

## **Appendix I: Selecting Health Priorities**

### **Selecting Health Priorities**

These are the results of the CHA survey/SRMC survey/Focus Groups. They are ranked in accordance to the survey respondents' priorities.

**Community Concerns**

1. Transportation
2. Employment
3. Crime/Smoking
4. Drugs/Alcohol Abuse
5. Lack of Youth Activities
6. Safe/Affordable Housing
7. Discrimination
8. Teen Pregnancy

**Health Concerns**

1. Diabetes/Heart Disease
2. Cancer
3. High Blood Pressure/ Stroke
4. Obesity/Lack of Physical Activity/Poor Nutrition Habits
  - A. Weekly Physical Activity
    1. No safe place to walk
    2. 42% No activity  $\leq$  2x week
  - B. Fast Foods  
64% eat out 3 or more times a week
  - C. Personal Health  
30% rate their health fair or worse

**Barriers to Access to Care**

1. Transportation
2. Cost
3. No appt./ too long wait time/ Inconvenient times
4. Lack of Information
5. Language Barriers

**Community Health Care Needs**

1. Mental Health/Drug & Alcohol Treatment
2. Health Education/Classes/ Screenings

- A. Diabetes
  - B. Cholesterol/ Blood Pressure
  - C. Cancer
  - D. Family Planning/Teen Pregnancy
  - E. HIV/AIDS
  - F. Immunizations
3. Food/Utility payment Assistance
  4. Smoke-Free Environment
  5. Dental Care
  6. Insurance/Medicaid/Medicare

**References**

**References**

Cecil G. Sheps Center for Health Services Research – University of North Carolina, Chapel Hill  
<http://www.shepscenter.unc.edu/Data.html>

<http://www.shepscenter.unc.edu/hp/prof04.htm>

Center for Disease Control & Prevention - STD Surveillance 2004  
<http://www.cdc.gov/std/stats/toc2004.htm>

CLIKS: Community-Level Information on Kids  
<http://www.aecf.org/cgi-bin/cliiks.cgi>

Clinton City School District  
[http://www.greatschools.net/cgi-bin/nc/district\\_profile/159/](http://www.greatschools.net/cgi-bin/nc/district_profile/159/)

Employment Security Commission of North Carolina – Labor & Wage Unit, Labor Market Information Division  
<http://eslmi23.esc.state.nc.us/ew/>

Health System Change  
<http://www.hschange.org>

\_Log into North Carolina (LINC)  
[http://data.osbm.state.nc.us/pls/linc/dyn\\_linc\\_main.show](http://data.osbm.state.nc.us/pls/linc/dyn_linc_main.show)

MapStats from FedStats  
<http://www.fedstats.gov>

North Carolina Child Advocacy Institute  
<http://www.ncchild.org>

North Carolina Communicable Disease Control  
<http://www.epi.state.nc.us/epi/gcdc.html>

North Carolina Crime Statistics  
<http://sbi2.jus.state.nc.us/crp/public/Default.htm>

North Carolina Department of Health & Human Services – Division of Medical Assistance  
<http://www.dhhs.state.nc.us/dma/>

North Carolina Department of Health & Human Services – HIV/STD Prevention & Care Branch  
<http://www.epi.state.nc.us/epi/hiv/surveillance.html>

North Carolina Division of Public Health  
<http://www.ncpublichealth.com/>

North Carolina Division of Public Health – Oral Health Section  
<http://www.communityhealth.dhhs.state.nc.us/dental/>

North Carolina Division of Public Health – Women’s & Children’s Health Section  
<http://wch.dhhs.state.nc.us/>

North Carolina Quick Facts Form the US Census Bureau: Sampson  
<http://quickfacts.census.gov/qfd/states/37000.html>

North Carolina Rural Data Bank: Sampson  
<http://www.ncruralcenter.org/databank/index.html>

North Carolina State Center for Health Statistics (NC-SCHS)  
<http://www.schs.state.nc.us/SCHS/index.html>

Public Schools of North Carolina  
<http://www.ncpublicschools.org/accountability/reporting/sat/2005>

North Carolina State Demographics  
<http://demog.state.nc.us/>

North Carolina Alcohol Facts  
<http://ww.hsrc.unc.edu>

Sampson County Economic Development  
<http://www.sampsonedc.com/>

Sampson County School Districts  
[http://www.greatschools.net/cgi-bin/nc/district\\_profile/159/](http://www.greatschools.net/cgi-bin/nc/district_profile/159/)

USA Counties in Profile  
<http://www.stats.nc>